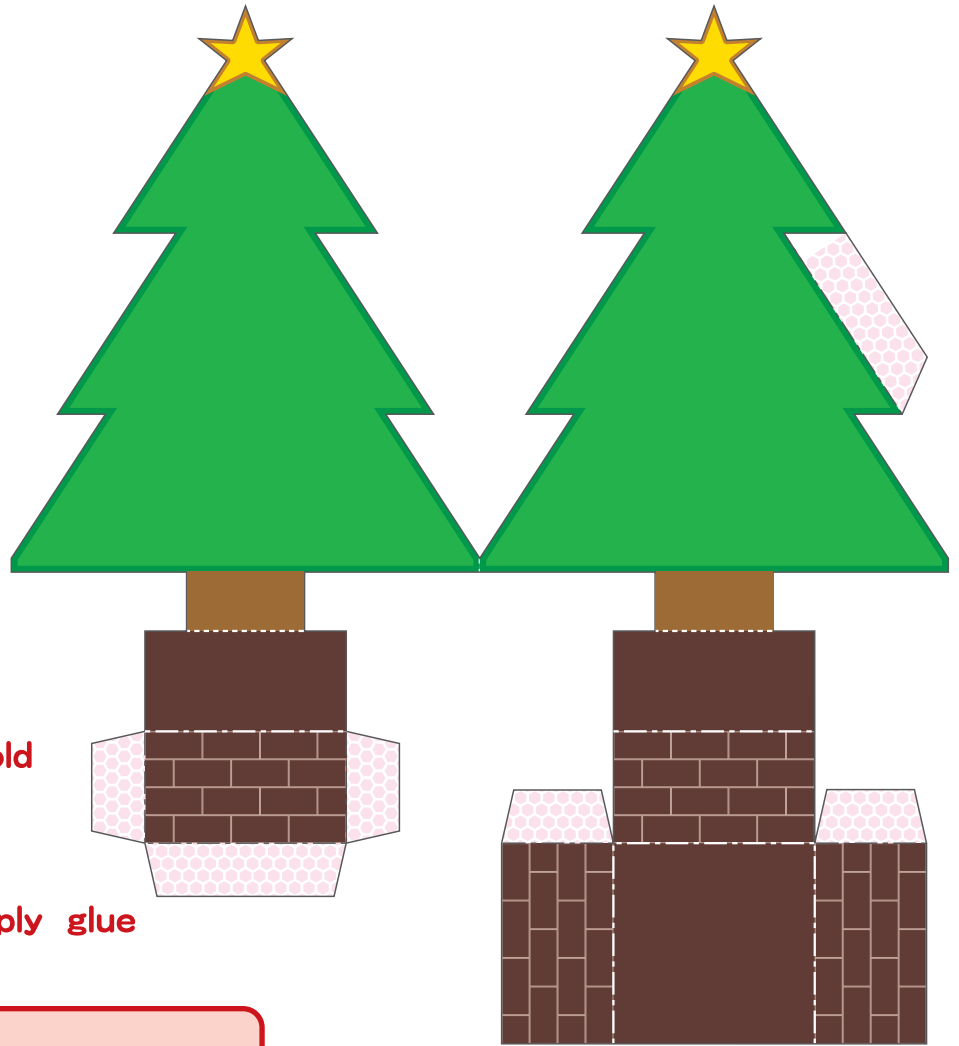
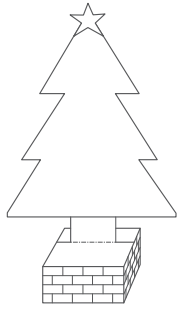






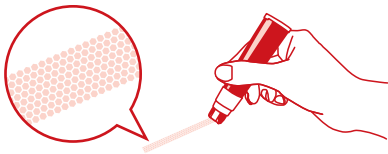
こう さいく じ かん
幸作の時間



-  Cutoff line
-  Mountain fold
-  Valley fold
-  Place to apply glue

How to make it.

- 1** Apply Norino glue along the pink / green dotted areas.



- 2** Cut out the turtle with School Scissors.



Handy hint!

First get a larger cutout than the actual turtle, then trim off the excess edge to the precise shape.

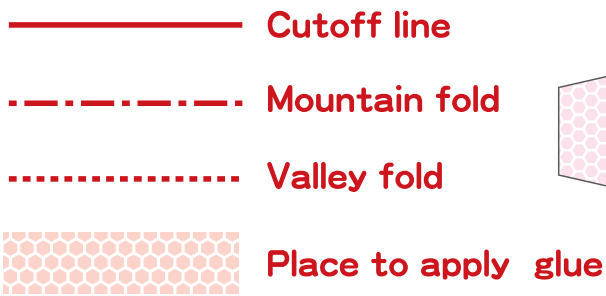
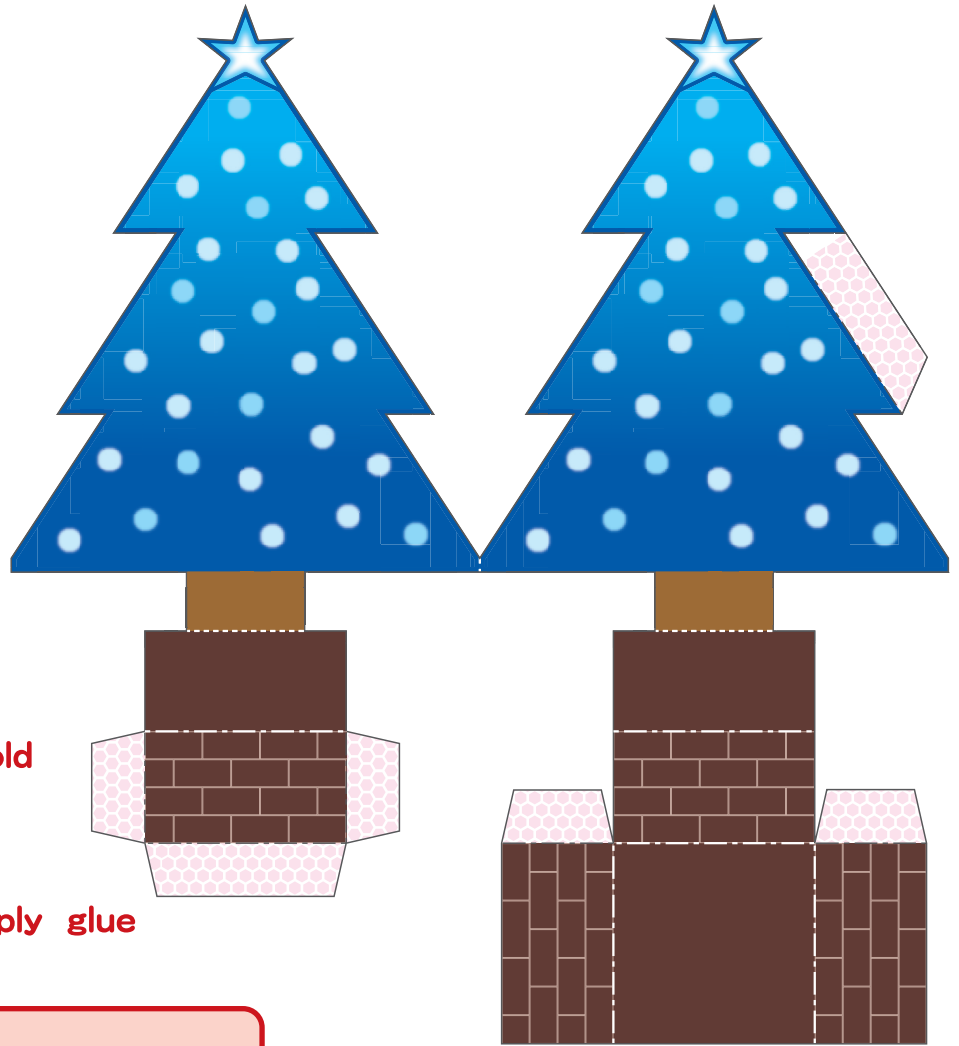
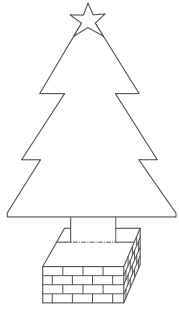
School Scissors with non-stick fluorine-coated blades are useful, because glue does not stick on.

- 3** Fold and fasten off. Well done!

Norino, the glue tape for neat and firm adhesion.

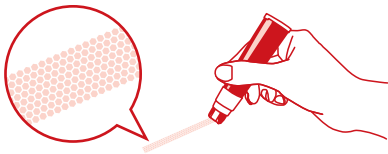


こころ さいく じかん かん 幸作の時間



How to make it.

- 1 Apply Norino glue along the pink / green dotted areas.



- 2 Cut out the turtle with School Scissors.



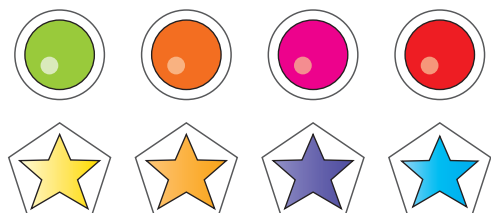
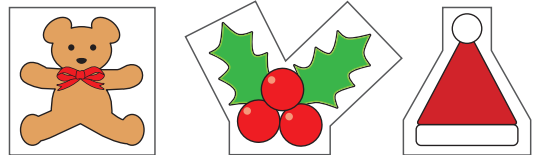
Handy hint!

First get a larger cutout than the actual turtle, then trim off the excess edge to the precise shape.

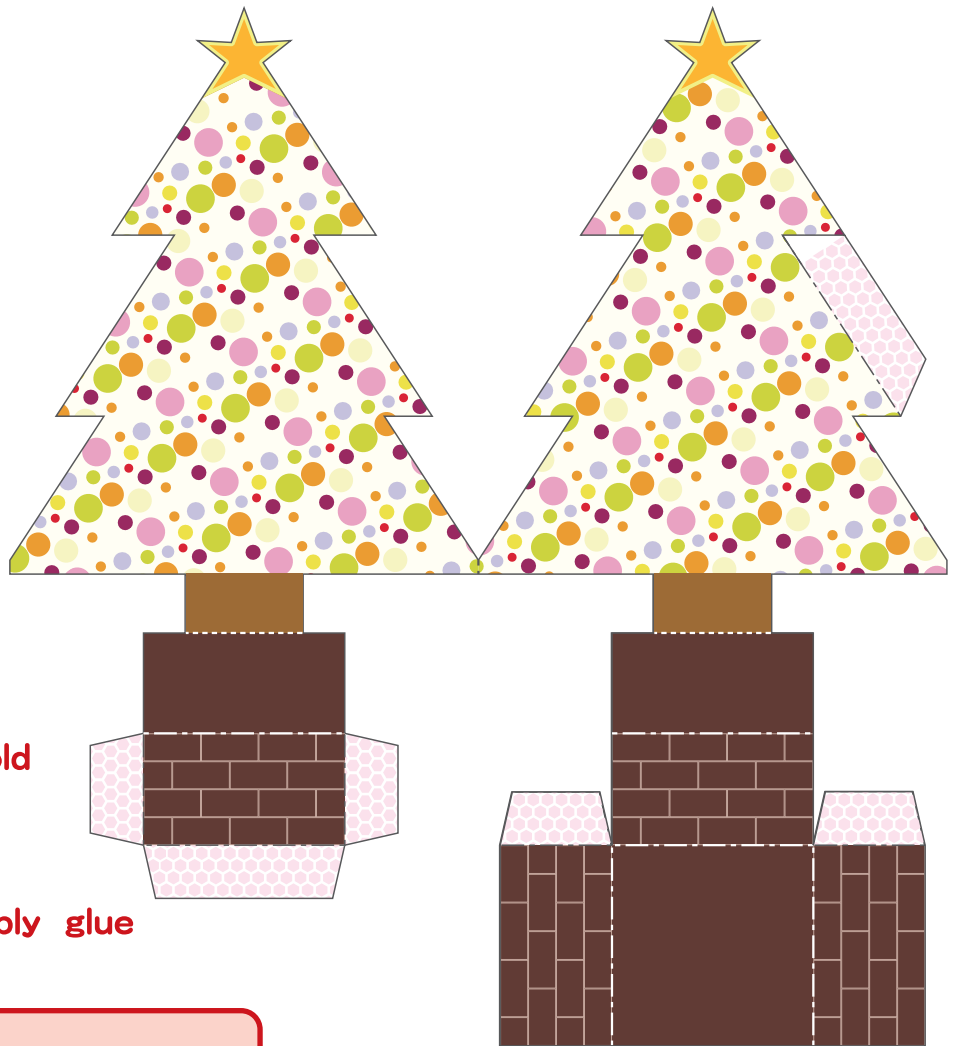
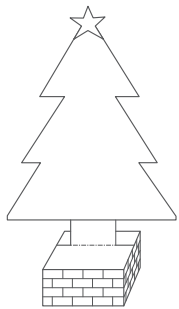
School Scissors with non-stick fluorine-coated blades are useful, because glue does not stick on.





- 3 Fold and fasten off. Well done!

Norino, the glue tape for neat and firm adhesion.



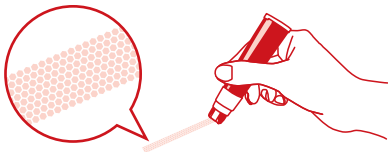
こう さいく じ かん
幸作の時間



-  Cutoff line
-  Mountain fold
-  Valley fold
-  Place to apply glue

How to make it.

- 1 Apply Norino glue along the pink / green dotted areas.**



- 2 Cut out the turtle with School Scissors.**



Handy hint!

First get a larger cutout than the actual turtle, then trim off the excess edge to the precise shape.

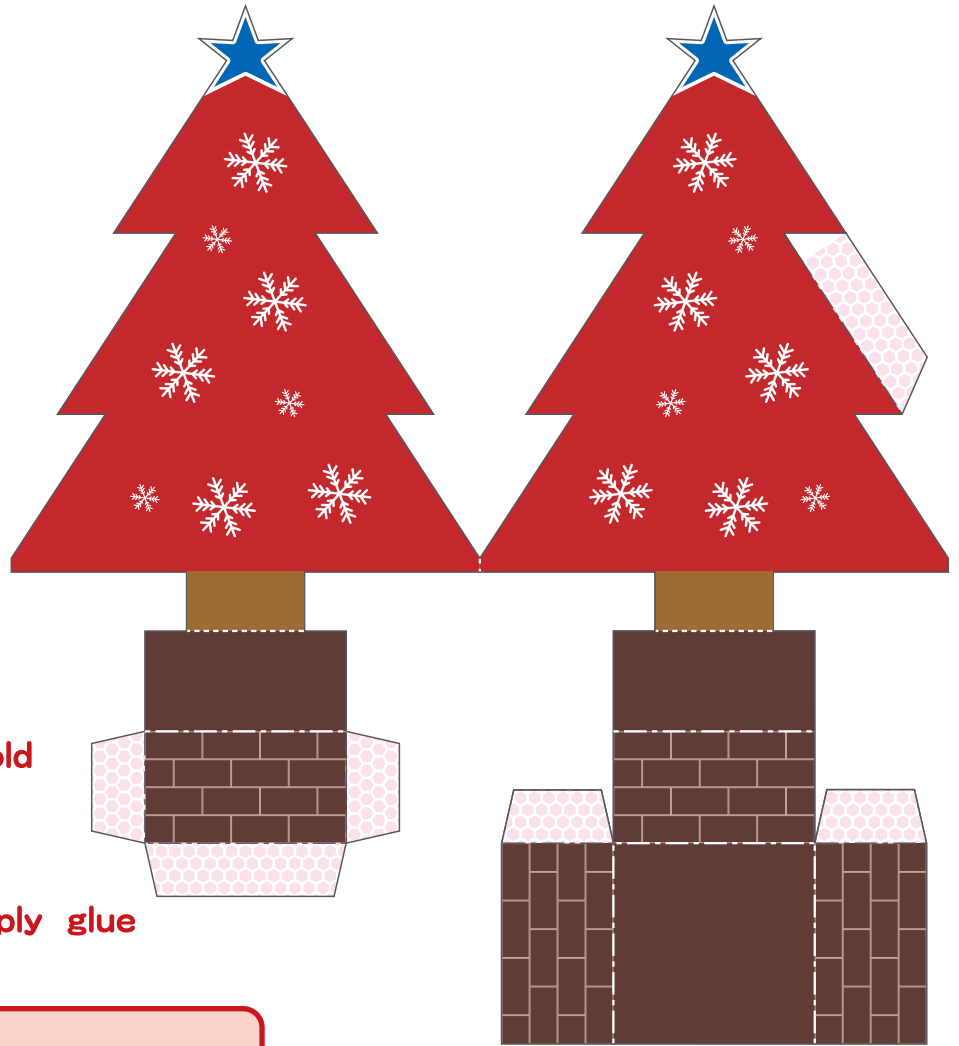
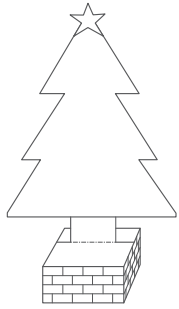
School Scissors with non-stick fluorine-coated blades are useful, because glue does not stick on.





- 3 Fold and fasten off. Well done!**

Norino, the glue tape for neat and firm adhesion.



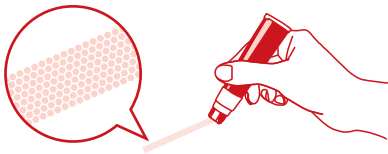
こころ さいく じかん かん
幸作の時間



-  Cutoff line
-  Mountain fold
-  Valley fold
-  Place to apply glue

How to make it.

- 1** Apply Norino glue along the pink / green dotted areas.



- 2** Cut out the turtle with School Scissors.



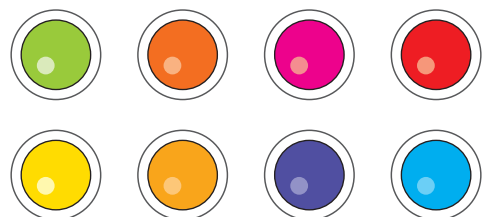
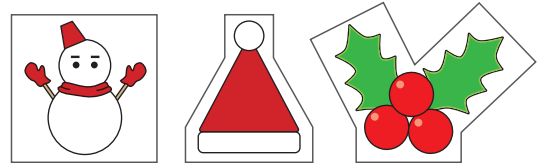
Handy hint!

First get a larger cutout than the actual turtle, then trim off the excess edge to the precise shape.

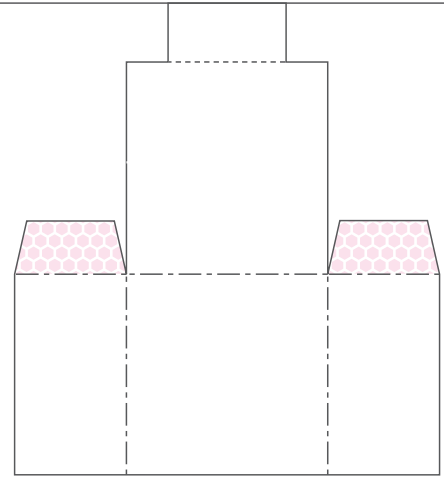
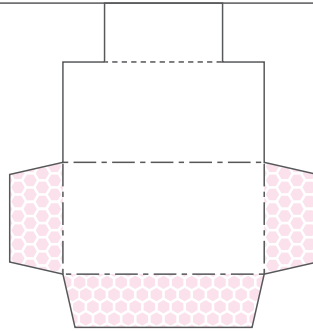
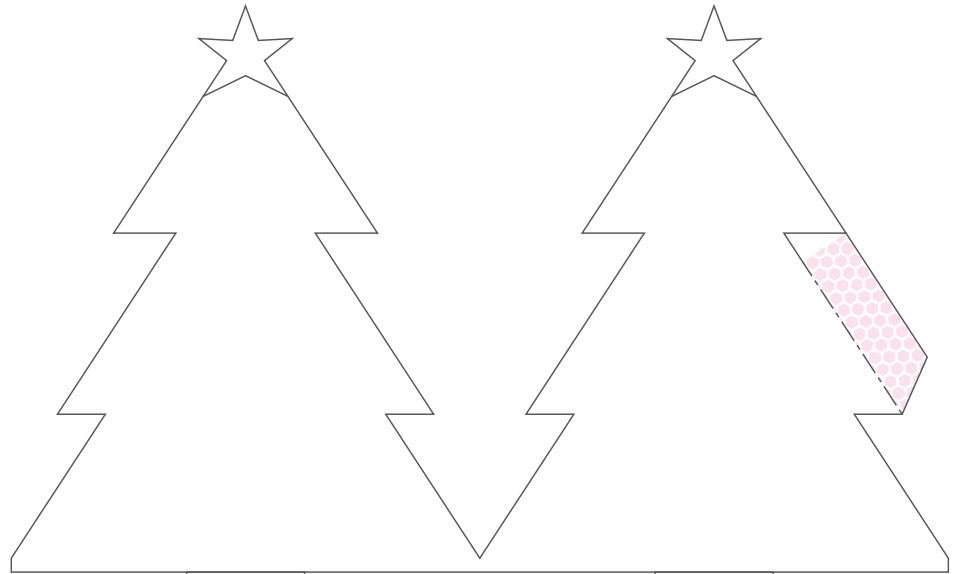
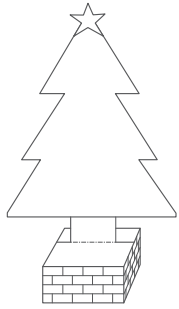
School Scissors with non-stick fluorine-coated blades are useful, because glue does not stick on.





- 3** Fold and fasten off. Well done!

Norino, the glue tape for neat and firm adhesion.



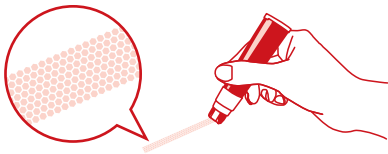
こう さいく じかん かん
幸作の時間



-  Cutoff line
-  Mountain fold
-  Valley fold
-  Place to apply glue

How to make it.

- 1** Apply Norino glue along the pink / green dotted areas.



- 2** Cut out the turtle with School Scissors.



Handy hint!

First get a larger cutout than the actual turtle, then trim off the excess edge to the precise shape.

School Scissors with non-stick fluorine-coated blades are useful, because glue does not stick on.

- 3** Fold and fasten off. Well done!

Norino, the glue tape for neat and firm adhesion.

