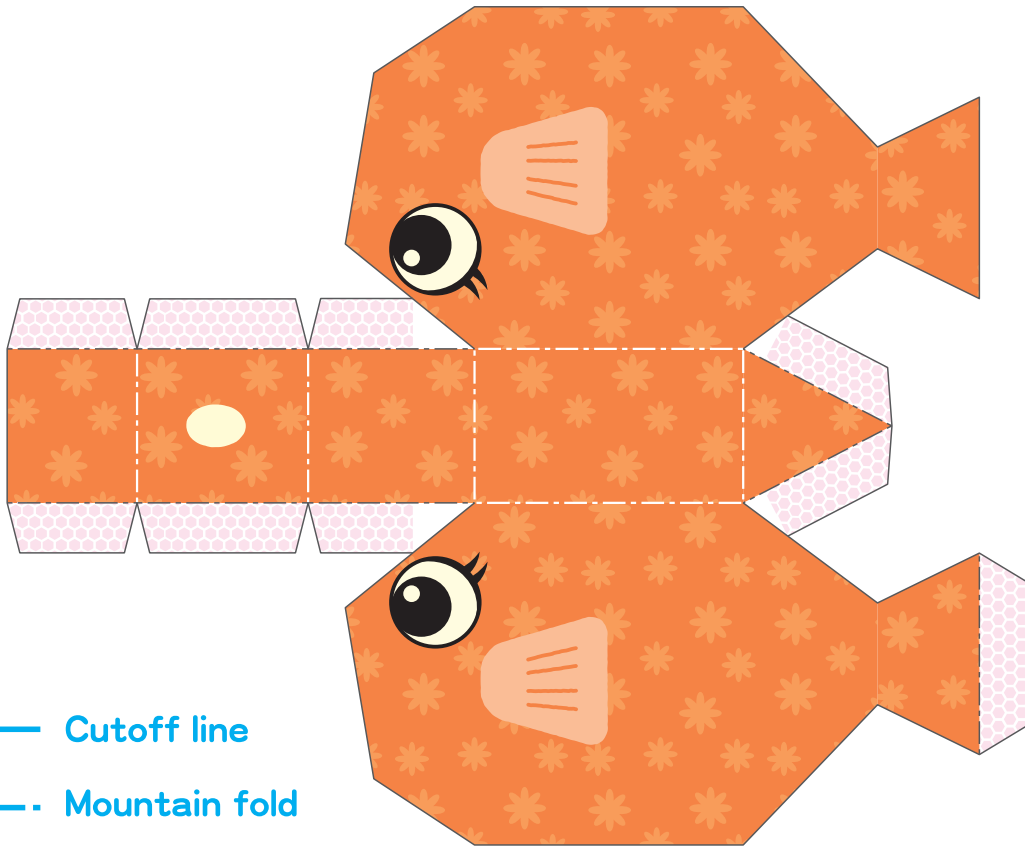


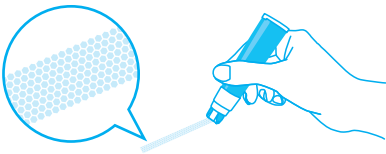
## こころ さいく じかん かん 幸作の時間



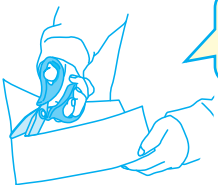
-  Cutoff line
-  Mountain fold
-  Place to apply glue

### How to make it.

- 1 Apply Norino glue along the pink / green dotted areas.



- 2 Cut out the turtle with School Scissors.



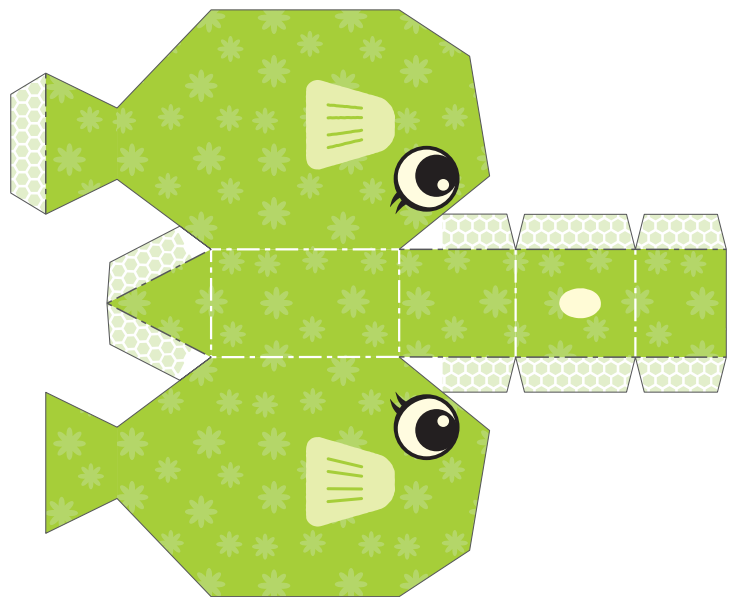
#### Handy hint!

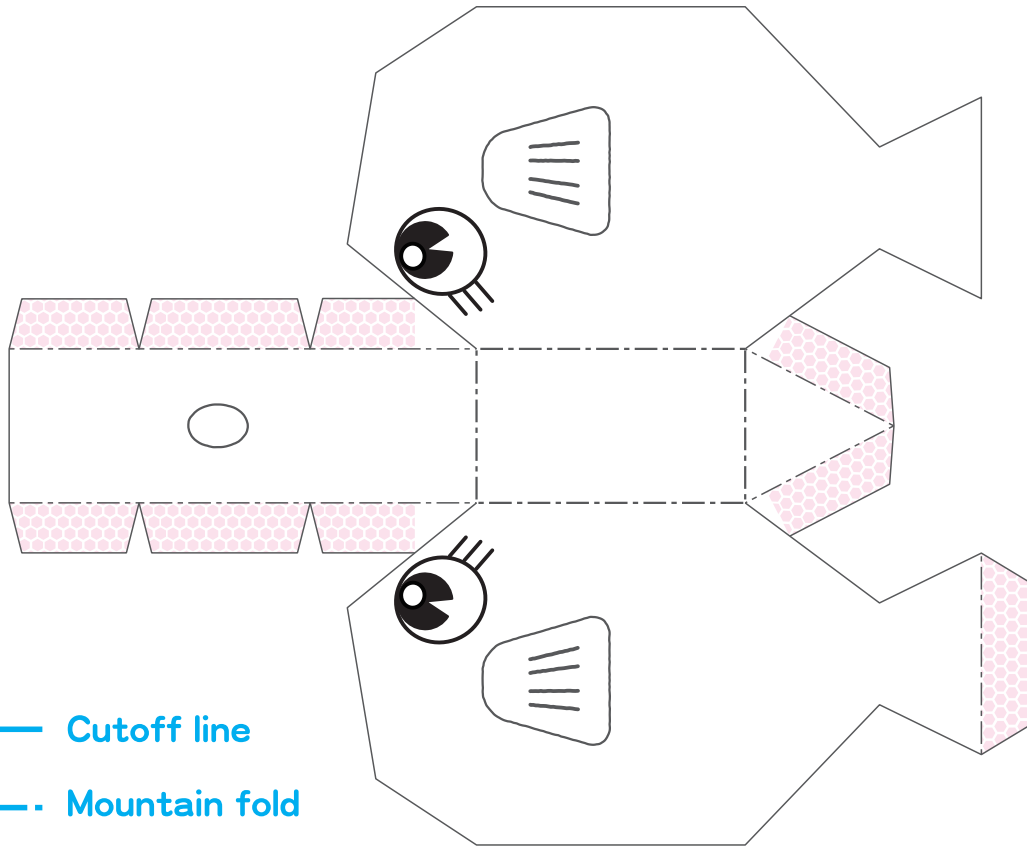
First get a larger cutout than the actual turtle, then trim off the excess edge to the precise shape.

School Scissors with non-stick fluorine-coated blades are useful, because glue does not stick on.

- 3 Fold and fasten off. Well done!

Norino, the glue tape for neat and firm adhesion.

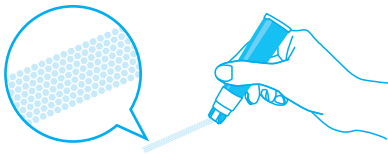




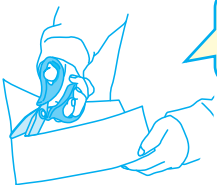
-  Cutoff line
-  Mountain fold
-  Place to apply glue

## How to make it.

- 1 Apply Norino glue along the pink / green dotted areas.



- 2 Cut out the turtle with School Scissors.



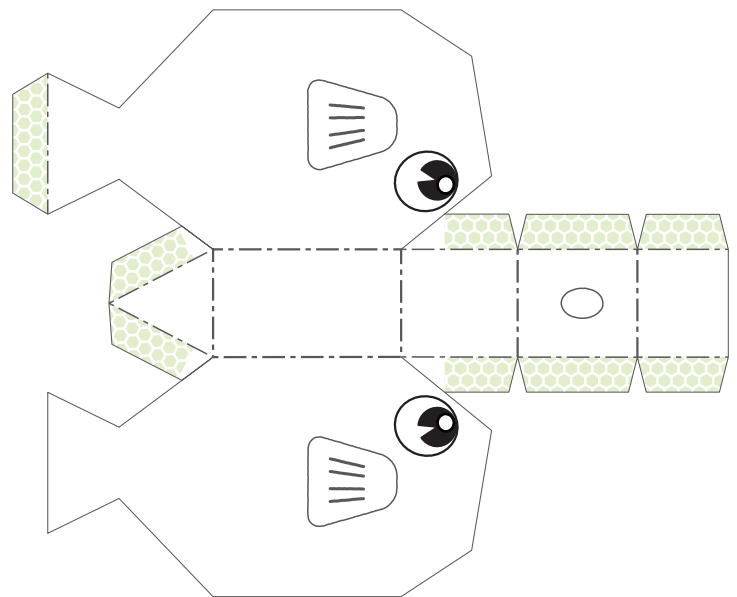
### Handy hint!

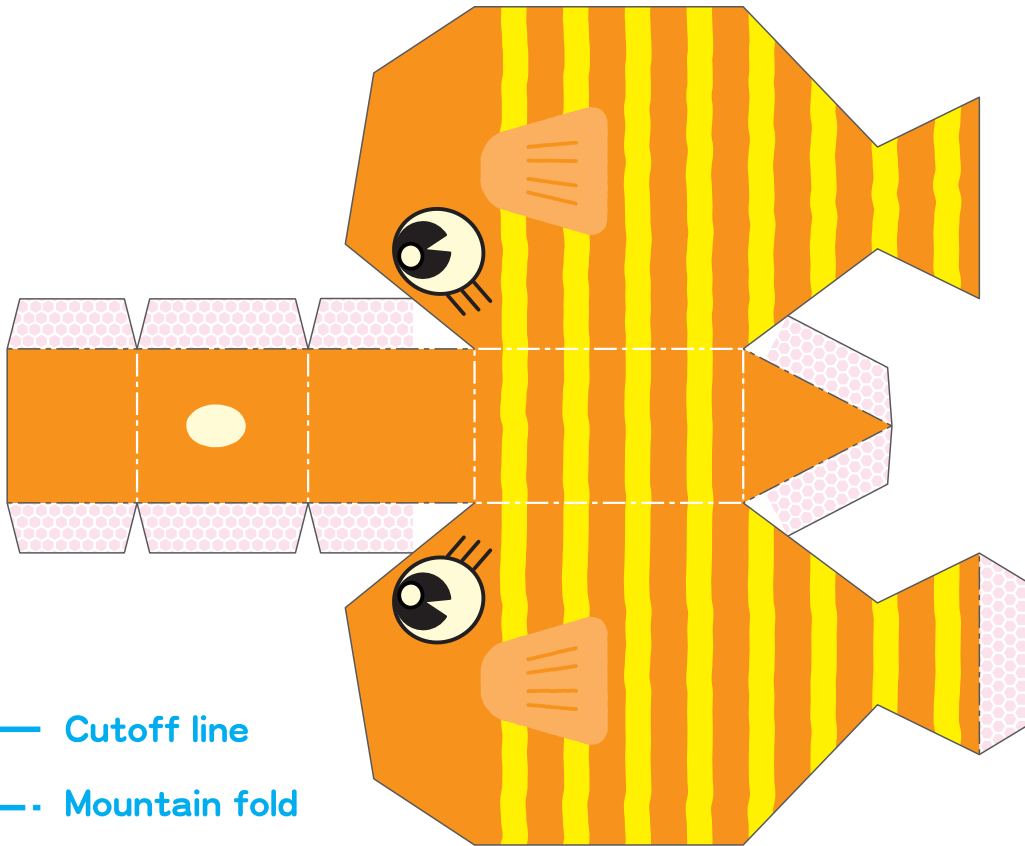
First get a larger cutout than the actual turtle, then trim off the excess edge to the precise shape.

School Scissors with non-stick fluorine-coated blades are useful, because glue does not stick on.

- 3 Fold and fasten off. Well done!

Norino, the glue tape for neat and firm adhesion.

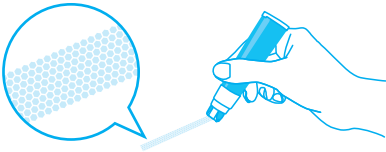




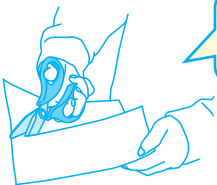
-  Cutoff line
-  Mountain fold
-  Place to apply glue

## How to make it.

- 1 Apply Norino glue along the pink / green dotted areas.



- 2 Cut out the turtle with School Scissors.



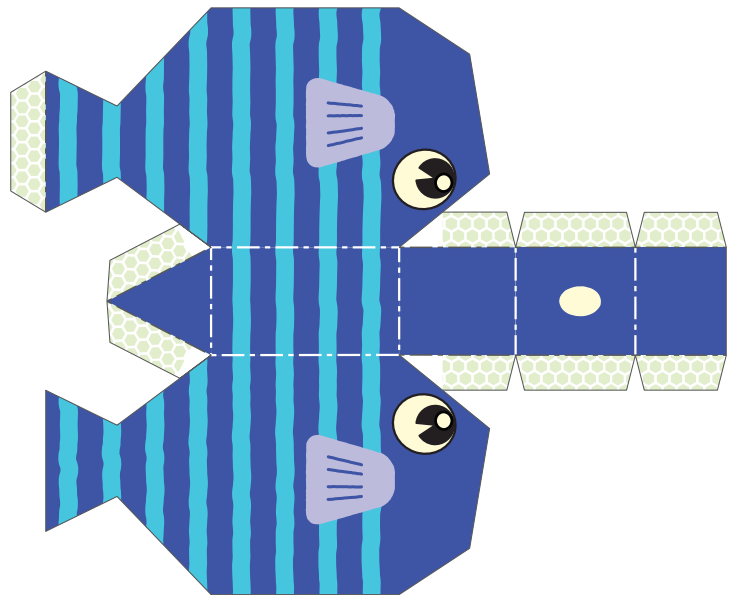
### Handy hint!

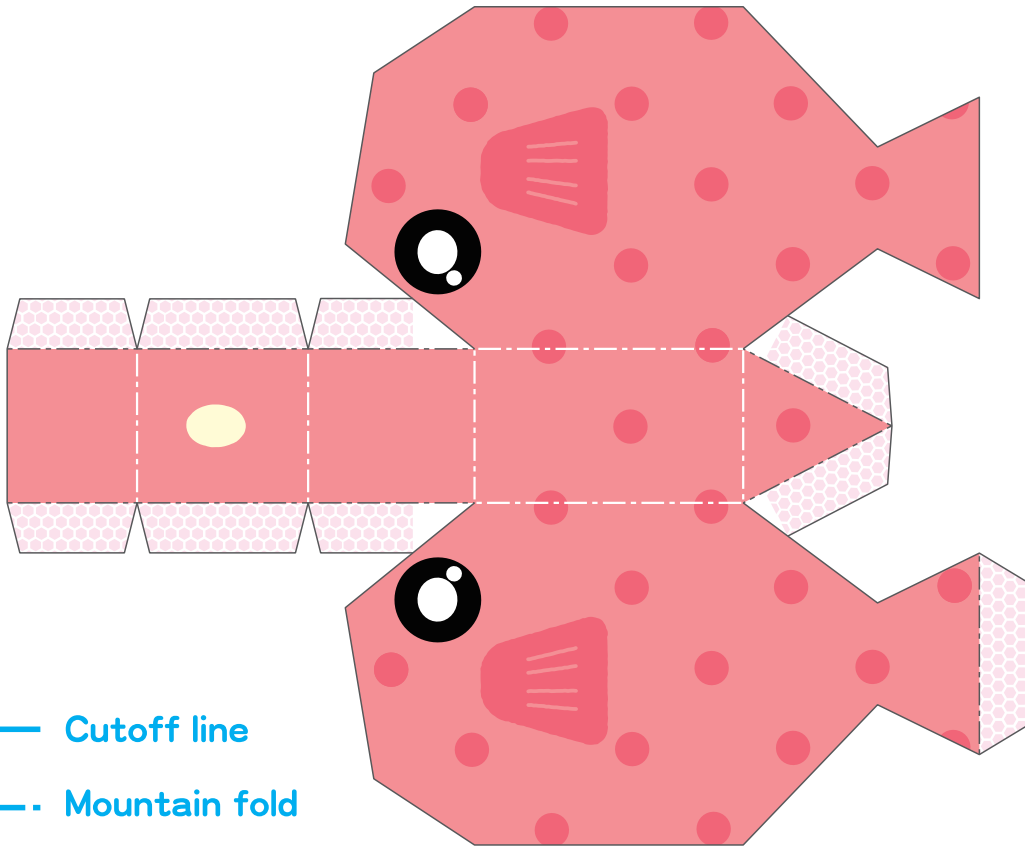
First get a larger cutout than the actual turtle, then trim off the excess edge to the precise shape.

School Scissors with non-stick fluorine-coated blades are useful, because glue does not stick on.

- 3 Fold and fasten off. Well done!

Norino, the glue tape for neat and firm adhesion.

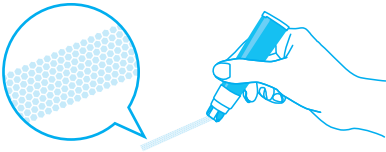




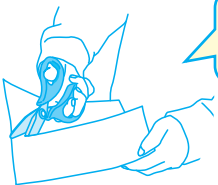
-  Cutoff line
-  Mountain fold
-  Place to apply glue

## How to make it.

- 1 Apply Norino glue along the pink / green dotted areas.



- 2 Cut out the turtle with School Scissors.



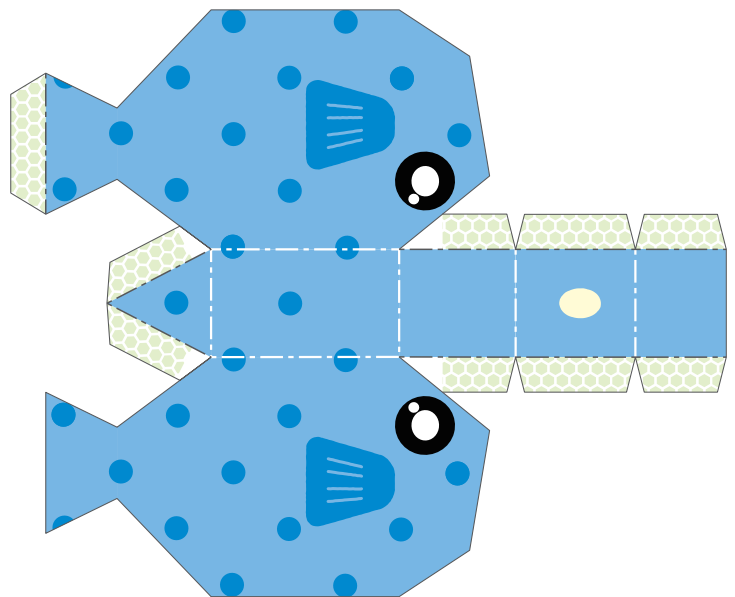
### Handy hint!

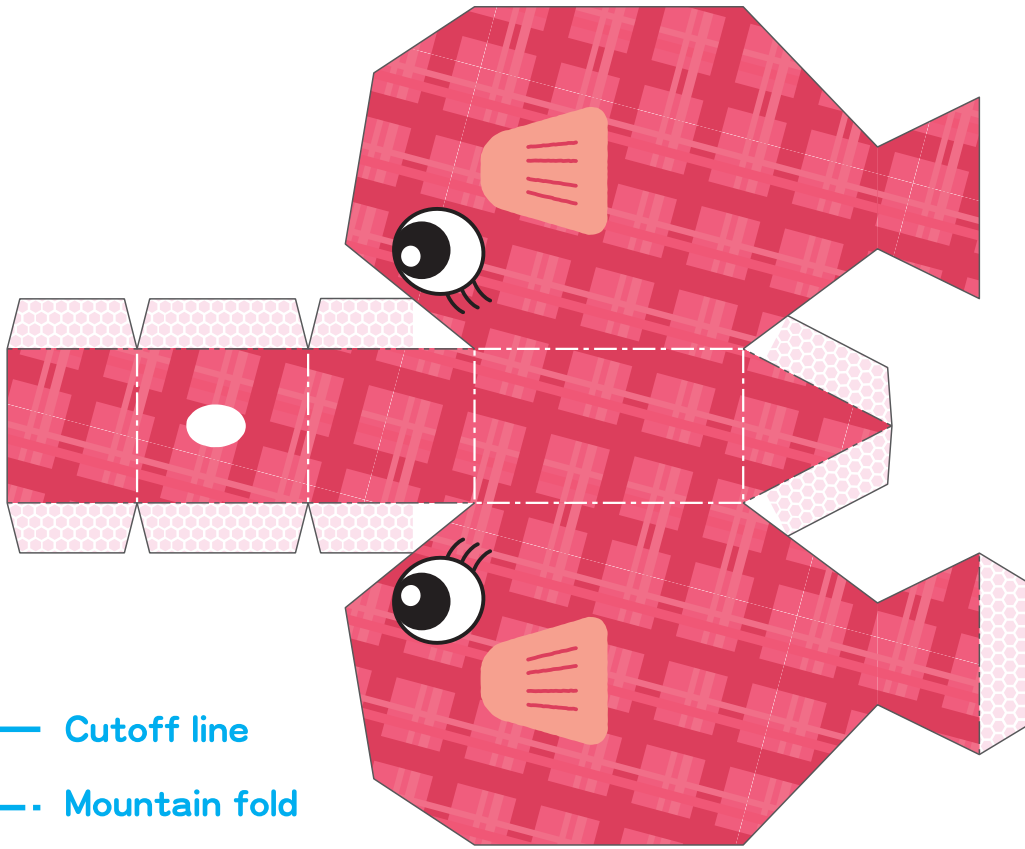
First get a larger cutout than the actual turtle, then trim off the excess edge to the precise shape.

School Scissors with non-stick fluorine-coated blades are useful, because glue does not stick on.

- 3 Fold and fasten off. Well done!

Norino, the glue tape for neat and firm adhesion.

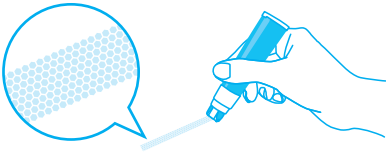




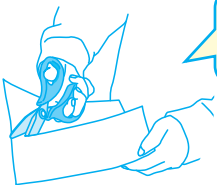
-  Cutoff line
-  Mountain fold
-  Place to apply glue

## How to make it.

- 1 Apply Norino glue along the pink / green dotted areas.



- 2 Cut out the turtle with School Scissors.



### Handy hint!

First get a larger cutout than the actual turtle, then trim off the excess edge to the precise shape.

School Scissors with non-stick fluorine-coated blades are useful, because glue does not stick on.

- 3 Fold and fasten off. Well done!

Norino, the glue tape for neat and firm adhesion.

