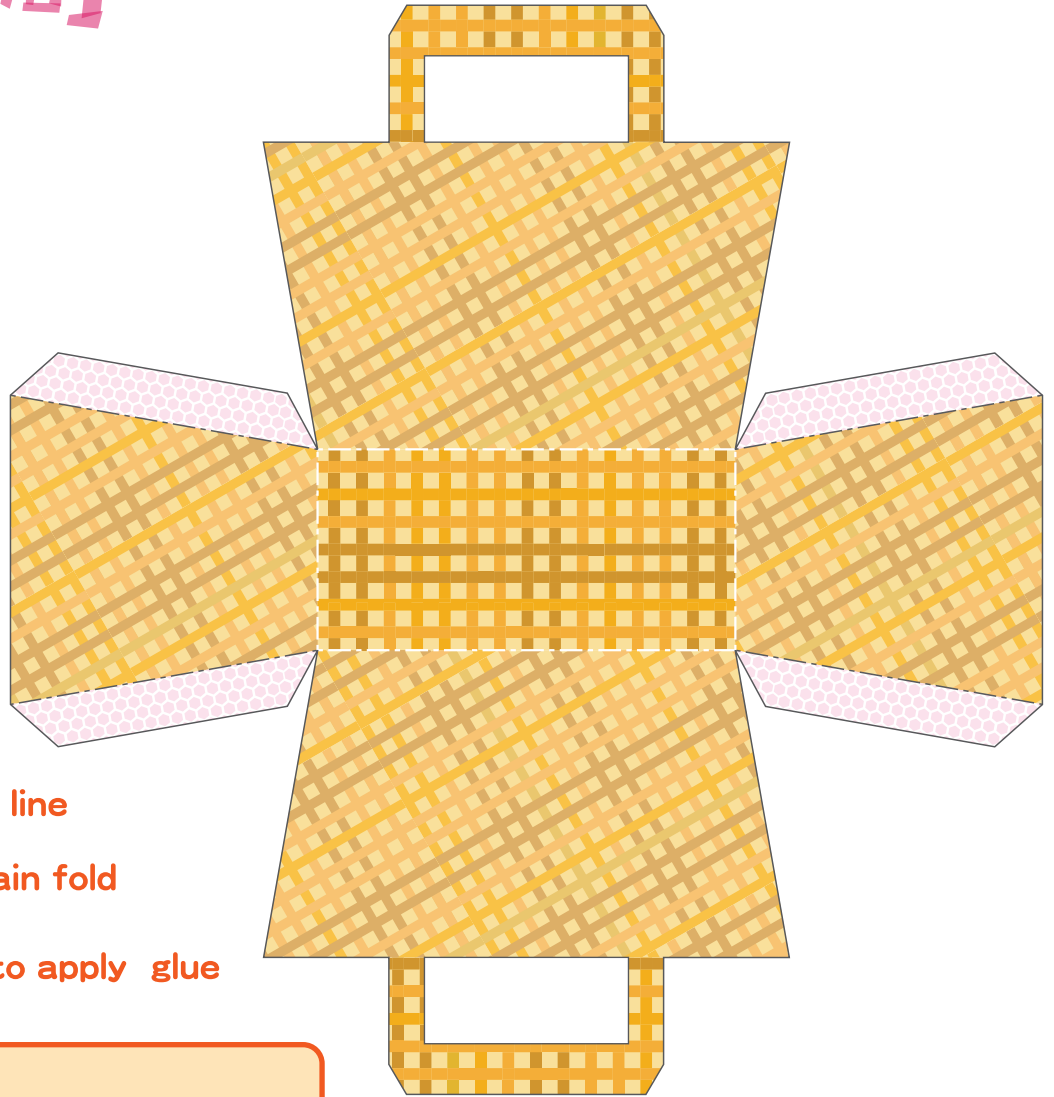
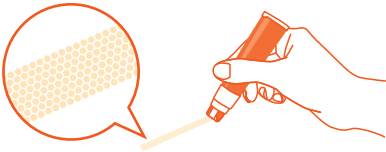


こころの時間

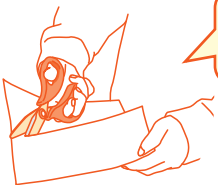


How to make it.

- 1 Apply Norino glue along the pink / green dotted areas.



- 2 Cut out the turtle with School Scissors.



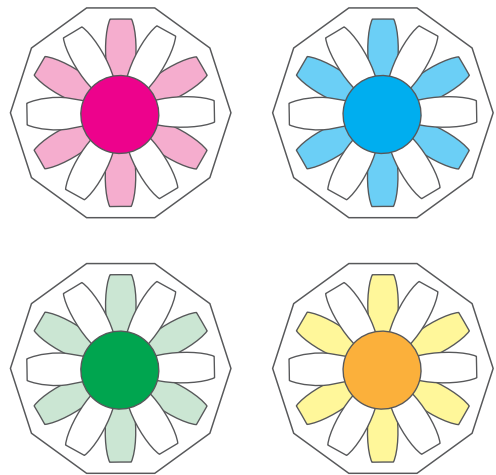
Handy hint!

First get a larger cutout than the actual turtle, then trim off the excess edge to the precise shape.

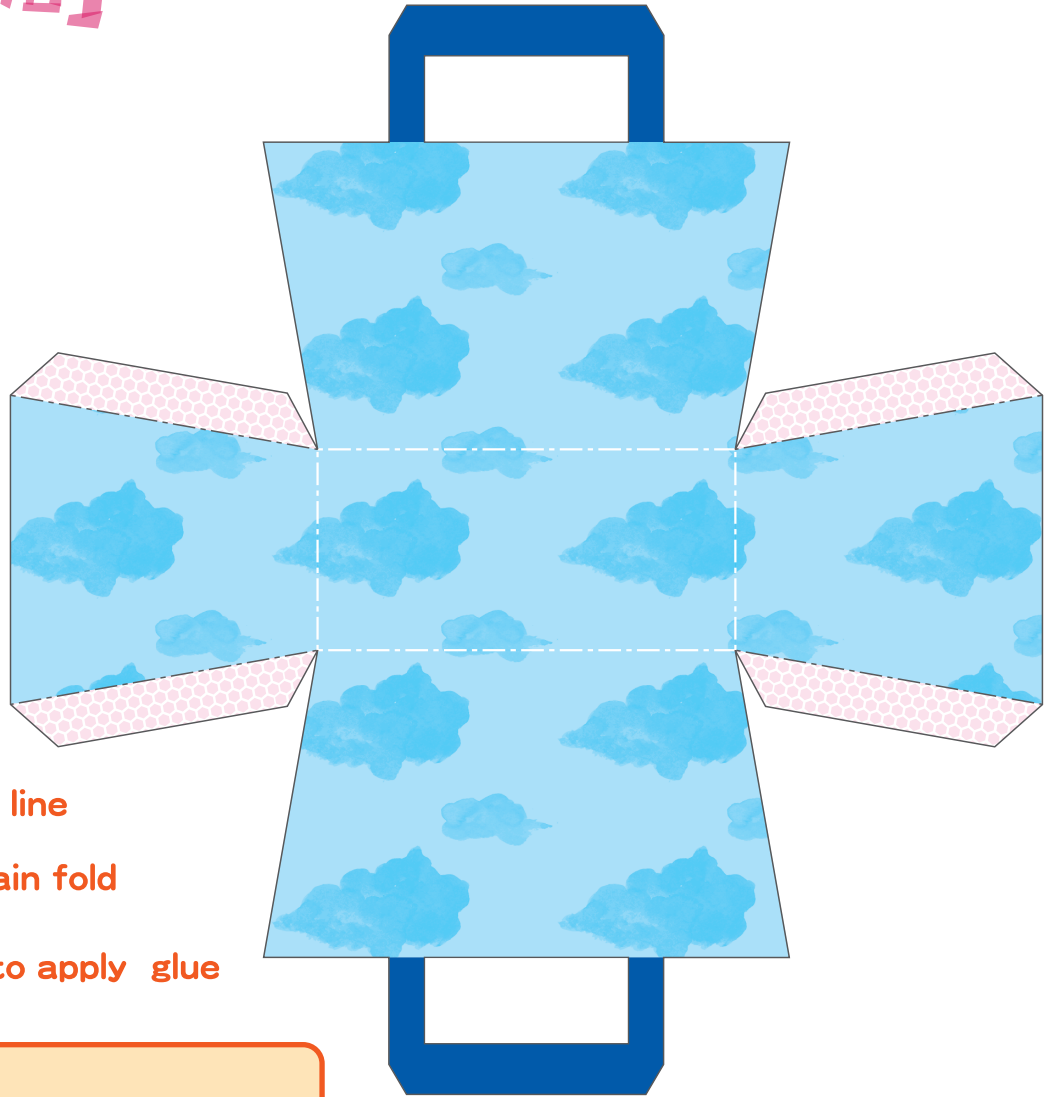
School Scissors with non-stick fluorine-coated blades are useful, because glue does not stick on.

- 3 Fold and fasten off. Well done!

Norino, the glue tape for neat and firm adhesion.



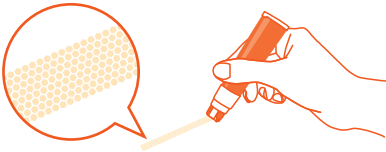
こころ 作るの時間 かん



-  Cutoff line
-  Mountain fold
-  Place to apply glue

How to make it.

- 1 Apply Norino glue along the pink / green dotted areas.



- 2 Cut out the turtle with School Scissors.



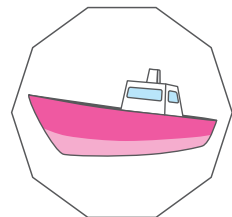
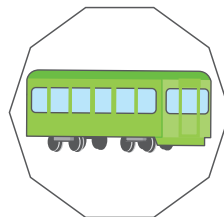
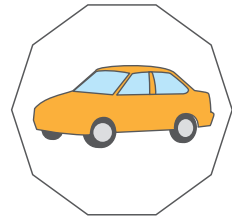
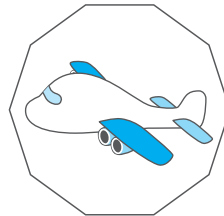
Handy hint!

First get a larger cutout than the actual turtle, then trim off the excess edge to the precise shape.

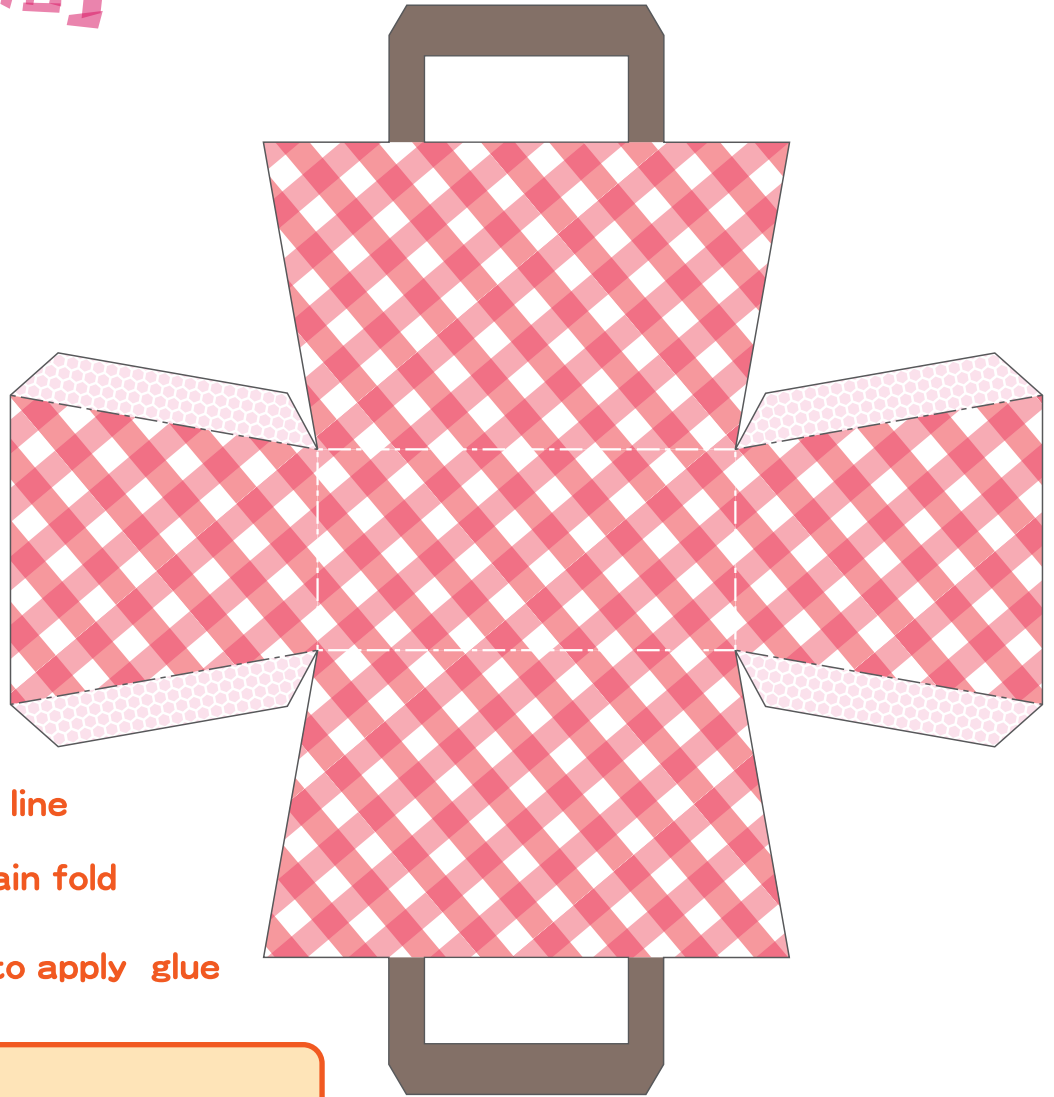
School Scissors with non-stick fluorine-coated blades are useful, because glue does not stick on.

- 3 Fold and fasten off. Well done!

Norino, the glue tape for neat and firm adhesion.



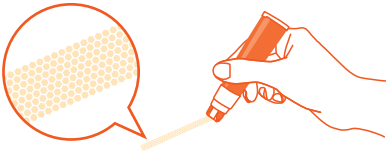
こころ さいく じ かん 幸作の時間



-  Cutoff line
-  Mountain fold
-  Place to apply glue

How to make it.

- 1** Apply Norino glue along the pink / green dotted areas.



- 2** Cut out the turtle with School Scissors.



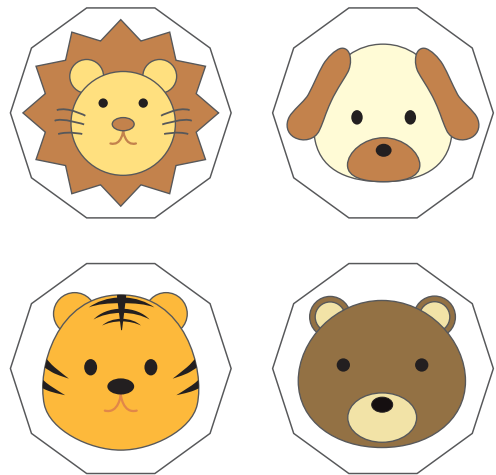
Handy hint!

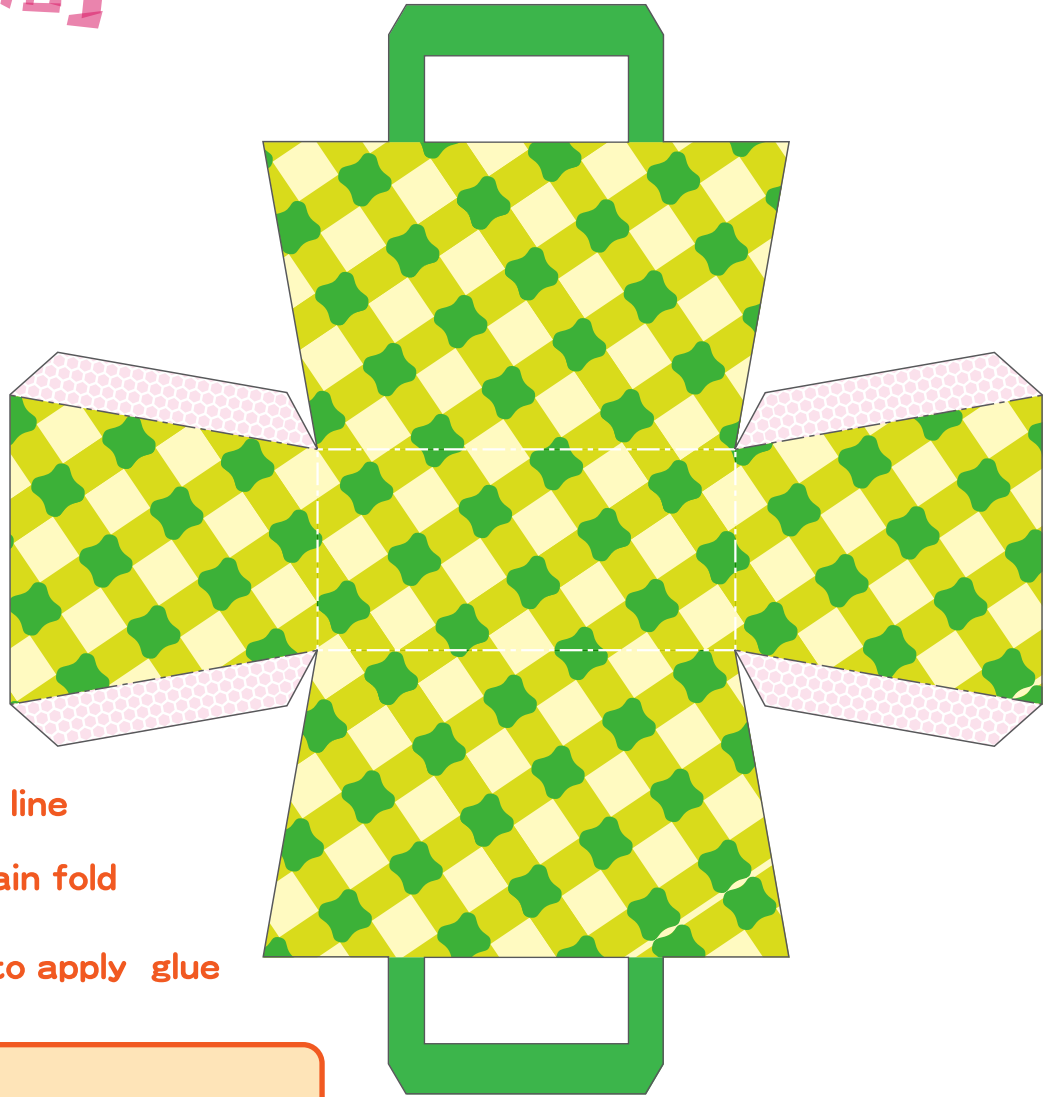
First get a larger cutout than the actual turtle, then trim off the excess edge to the precise shape.

School Scissors with non-stick fluorine-coated blades are useful, because glue does not stick on.

- 3** Fold and fasten off. Well done!

Norino, the glue tape for neat and firm adhesion.

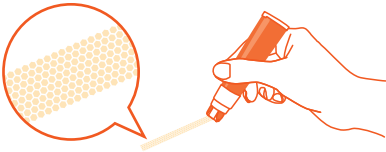




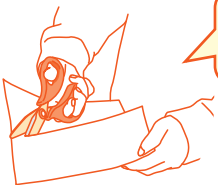
-  Cutoff line
-  Mountain fold
-  Place to apply glue

How to make it.

- 1 Apply Norino glue along the pink / green dotted areas.



- 2 Cut out the turtle with School Scissors.



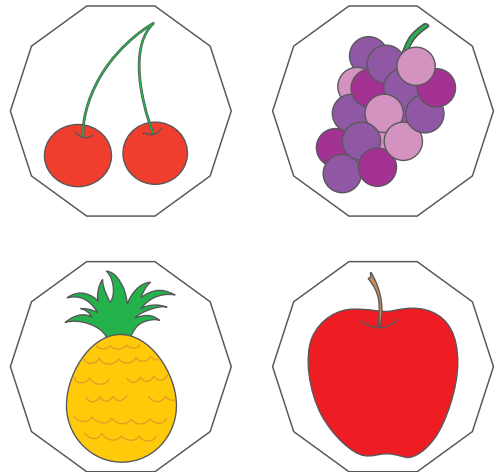
Handy hint!

First get a larger cutout than the actual turtle, then trim off the excess edge to the precise shape.

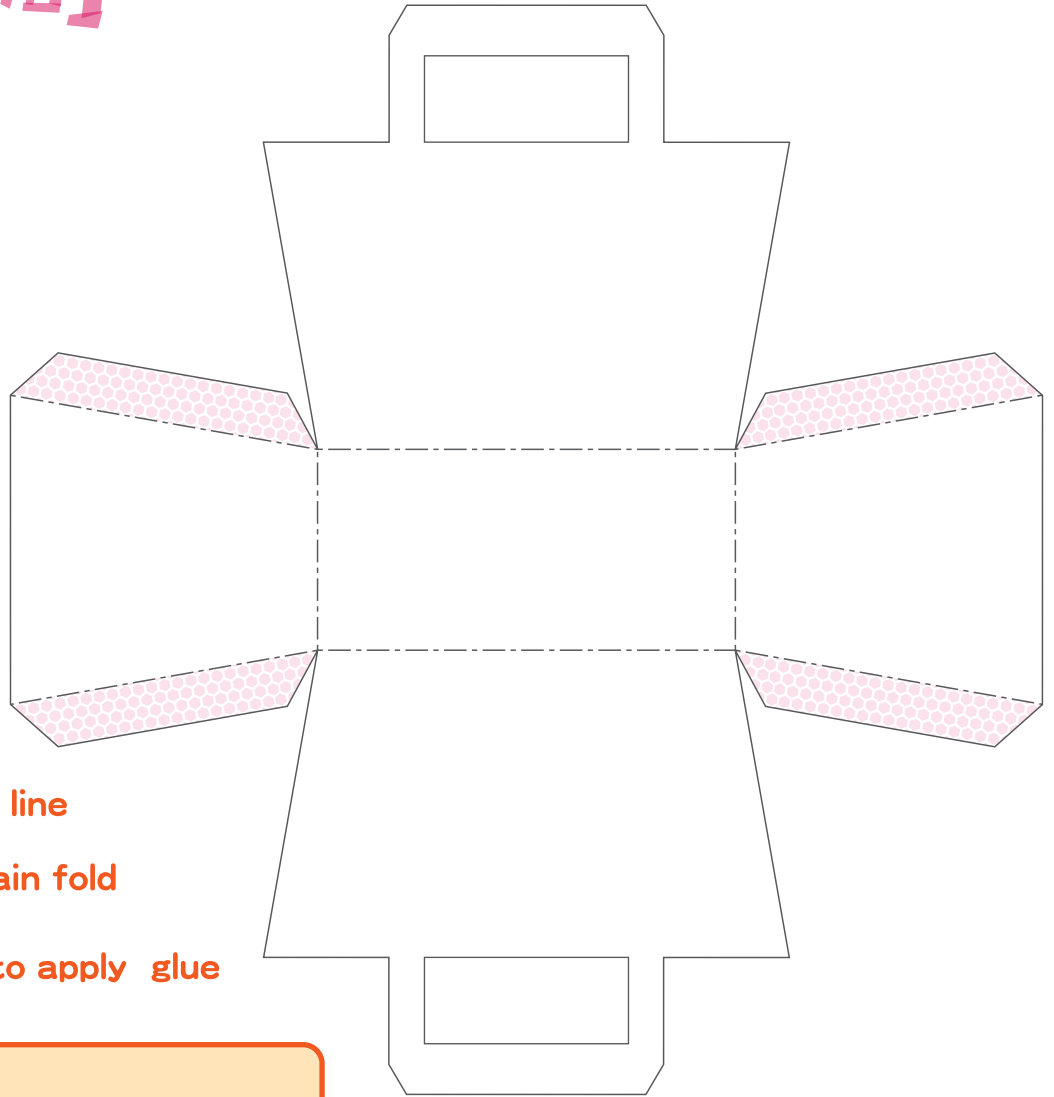
School Scissors with non-stick fluorine-coated blades are useful, because glue does not stick on.

- 3 Fold and fasten off. Well done!

Norino, the glue tape for neat and firm adhesion.



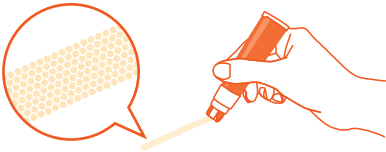
こころ さいく じかん かん 幸作の時間



-  Cutoff line
-  Mountain fold
-  Place to apply glue

How to make it.

- 1** Apply Norino glue along the pink / green dotted areas.



- 2** Cut out the turtle with School Scissors.



Handy hint!

First get a larger cutout than the actual turtle, then trim off the excess edge to the precise shape.

School Scissors with non-stick fluorine-coated blades are useful, because glue does not stick on.

- 3** Fold and fasten off. Well done!

Norino, the glue tape for neat and firm adhesion.

